



HUM-TS-0305 — Initial training, competence and/or adaptation of new/active operational staff for the application and use of the enhancements and improvements included of the OI Step Arrival Management Extended to En-Route Airspace

The planning for the training set-up, and the training itself includes training needs identification for affected actors with regard to new procedures and new support system; Training refers to the development of the skills, knowledge, understanding & attitude behaviour patterns required by an individual in order to adequately perform their role & tasks ; potential negative effects of training during the transition are identified; potential interference between existing and new knowledge & skills are identified; potential negative effects of the training on operational task performance are identified; performance and competence levels in order to perform a defined task safely and efficiently are identified; provisions are made for emergency trainings ; the training covers normal operational conditions/ abnormal operational conditions and conditions in degraded mode

Category HUMAN

Stakeholder Unassigned

V3 End -

V4 Start -

V5 Start -

IOC -

V4 End -

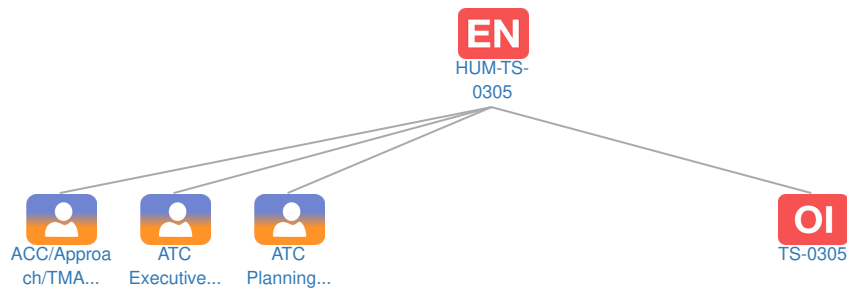
V5 End -

Unassigned: -

FOC -

Context

Related Elements



OI Operational Improvement Steps

| Code | Benefits start date (IOC) - Full benefit date (FOC) | | | | | | | | | | | | | | | | | | | | | | | | | | |
|---|---|----|----|----|----|----|----|----|----|----|----|----|----|----|----|----|----|----|----|----|----|----|----|----|----|----|--|
| | 15 | 16 | 17 | 18 | 19 | 20 | 21 | 22 | 23 | 24 | 25 | 26 | 27 | 28 | 29 | 30 | 31 | 32 | 33 | 34 | 35 | 36 | 37 | 38 | 39 | 40 | |
| HUM-TS-0305 | | | | | | | | | | | | | | | | | | | | | | | | | | | |
|  TS-0305 | | | | | | | | | | | | | | | | | | | | | | | | | | | |

EN Dependent Enablers: No associated data

PCP PCP Elements: No associated data

STK Stakeholders: No associated data

 Standards: No associated data

OBJ Implementation Objectives: No associated data

Stakeholder Lines of Action (SLoAs): No associated data

PJ SESAR Workpackages: No associated data