



DCB-0310 — Improved Efficiency in the Management of Airport and ATFCM Planning

Airport planning is continuously refined with the application of local airport CDM processes. The overall network planning proposes CTOT / TTA for all regulated flights. For those flights where the allocated constraints will have a negative impact (e.g. disturbing airport/airline operations), the Network shall take into account this information in order to possibly re-allocate CTOT / TTA. This results in an improved efficiency in the management of Airport and ATFCM Planning.

Rationale This OI builds on the achievements from DCB-0302. The follow-up adds the use of airport planning to improve the overall network planning (and vice versa).

Forecast V3 end date -

Benefits start date (IOC) 31-12-2021

Full benefits date (FOC) 31-12-2025

Current Maturity Level V3 finalised

Solution Data Quality Index -

Current Maturity Phase R&D

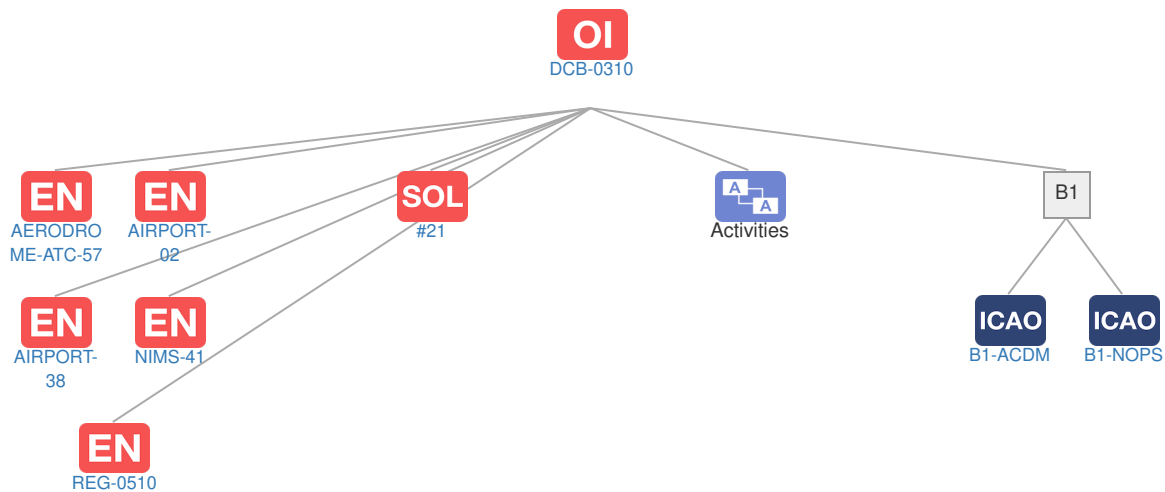
Scope -

Release R5





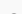
PCP Status -

Context

Related Elements



EN Enablers

Code	Dates																																			
	15	16	17	18	19	20	21	22	23	24	25	26	27	28	29	30	31	32	33	34	35	36	37	38	39	40										
DCB-0310																																				
 AERODROME-ATC-57																																				
 AIRPORT-02																																				
 AIRPORT-38																																				
 NIMS-41																																				
 REG-0510																																				

OI Dependent OI Steps

Relationship	Code	Title	Related Elements
Has predecessor	DCB-0302	Collaborative Management of Flight Updates	
Has successor	DCB-0213	Consolidation and facilitation of Target Times between local DCB, Airport CDM and Extended Arrival Management	

SOL SESAR Solutions

Code	Title	Program	Related Elements
#21	Airport Operations Plan and AOP-NOP Seamless Integration	SESAR1	

PCP PCP Elements: No associated data

OBJ Implementation Objectives: No associated data

ICAO ICAO Block Modules

Designator	Title	Related Elements
B1		
B1-ACDM	Optimized Airport Operations through A-CDM Total Airport Management	
B1-NOPS	Enhanced Flow Performance through Network Operational Planning	