



# CM-0206 — Conflict Detection and Resolution in the TMA using trajectory data

The system provides real-time assistance to the TMA controllers in conflict detection and resolution using trajectory data and provides resolution support information based upon predicted conflict detection and associated monitoring features.

**Rationale** The objective is to provide the controller (Planner or Tactical) with an automated Conflict Detection and Resolution tool using an enhanced Trajectory Prediction model through the use of improved data (e.g. extended flight plan data, real-time on board trajectory data, met data). Trajectory data may be made available via extended flight plans and new IOP capabilities.

**Forecast V3 end date** 09-12-2019

**Benefits start date (IOC)** 31-12-2026

**Full benefits date (FOC)** 31-12-2030

**Current Maturity Level** V2

**Solution Data Quality Index** -

**Current Maturity Phase** R&D

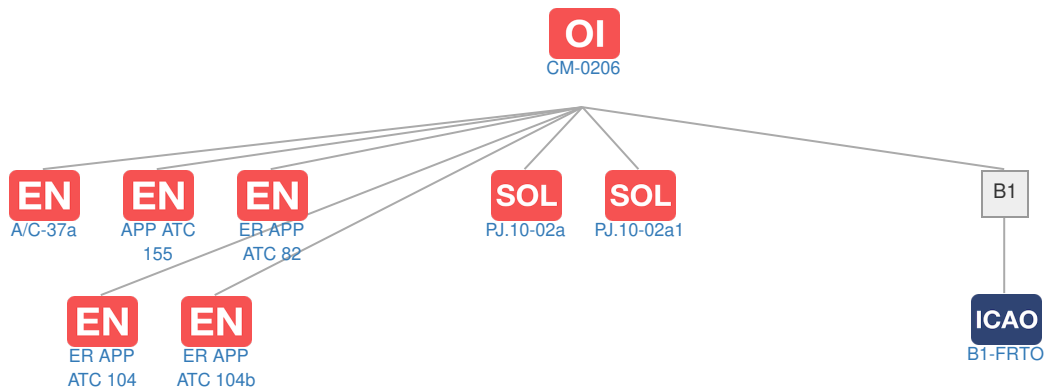
**Scope** -

**Release** R9

**PCP Status** -

## Context

### Related Elements



## EN Enablers

Code	Dates																										
	15	16	17	18	19	20	21	22	23	24	25	26	27	28	29	30	31	32	33	34	35	36	37	38	39	40	
CM-0206																											
🔒 A/C-37a	4	↓																									
🔒 APP ATC 155					▲																						
➔ ER APP ATC 82					▲																						
➔ ER APP ATC 104					▲																						
➔ ER APP ATC 104b																											

## OI Dependent OI Steps

Relationship	Code	Title	Related Elements
Has successor	CM-0408	Enhanced Conflict Detection and Resolution in the TMA	SOL OI EN DS

## SOL SESAR Solutions

Code	Title	Program	Related Elements
PJ.10-02a	Improved Performance in the Provision of Separation	SESAR 2020 Wave 1	SOL PJ OI ICAO
PJ.10-02a1	Improved performance in the provision of separation without use of ADS-C/EPP data	SESAR 2020 Wave 1	PJ OI DS EOC ICAO

## PCP PCP Elements: No associated data

## OBJ Implementation Objectives: No associated data

## ICAO ICAO Block Modules

Designator	Title	Related Elements
B1		
B1-FRTO	Improved Operations through Optimized ATS Routing	SOL OI OBJ PCP