



AO-0802-A — A-CDM process enhanced through integration of landside (passenger only) process outputs

Enhancement of the airside process with the inclusion of landside (passenger flow only) process outputs that can affect ATM performance e.g. through delayed departures.

This concept builds on A-CDM to describe the functional and technical requirements for inclusion of landside processes at an airport in both the planning and execution timeframe.

Rationale There are many situations where landside activities of an airport affect the airside performance of the airport and ultimately impact the ATM Network. Inclusion of outputs from landside processes (passenger only in STEP1) allows for improved accuracy and predictability of the airside operations.

Forecast V3 end date -

Benefits start date (IOC) 31-12-2023

Full benefits date (FOC) 31-12-2027

Current Maturity Level V3 finalised

Solution Data Quality Index -

Current Maturity Phase R&D

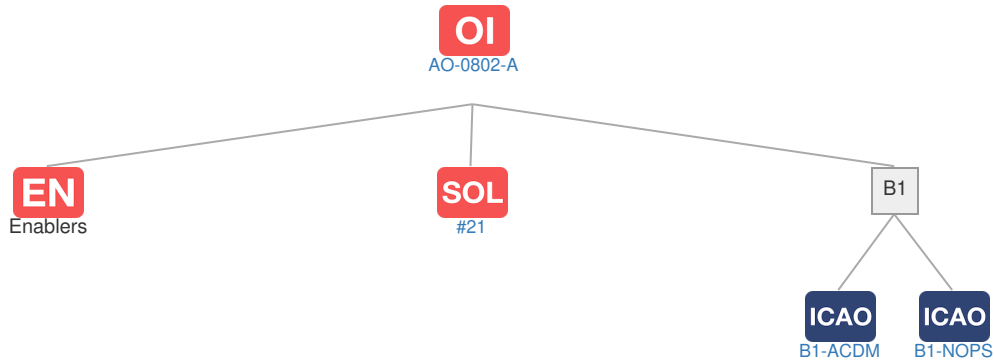
Scope -

Release R5

PCP Status -

Context

Related Elements



EN Enablers

Code	Dates																																																							
	15	16	17	18	19	20	21	22	23	24	25	26	27	28	29	30	31	32	33	34	35	36	37	38	39	40																														
AO-0802-A																																																								
AERODROME-ATC-57				▲																																																				
AIRPORT-03			▲ V5							IOC - FOC																																														
AIRPORT-31																																																								
AIRPORT-35a			▲			V4					V5											IOC - FOC																																		
AIRPORT-38			▲	V4	V5					IOC - FOC																																														
HUM-007			▲								V5											IOC - FOC																																		
HUM-014			▲								V5												IOC - FOC																																	
HUM-015			▲								V5												IOC - FOC																																	

OI Dependent OI Steps

Relationship Code	Title	Related Elements
Has successor	AO-0802-B A-CDM Process Enhanced through Integration of Landside (passenger and baggage) Process Outputs	SOL OI EN DS

SOL SESAR Solutions

Code	Title	Program	Related Elements
#21	Airport Operations Plan and AOP-NOP Seamless Integration	SESAR1	SOL OI OBJ DS EOC PCP ICAO

PCP PCP Elements: No associated data

OBJ Implementation Objectives: No associated data

ICAO ICAO Block Modules

Designator	Title	Related Elements
B1		
B1-ACDM	Optimized Airport Operations through A-CDM Total Airport Management	SOL OI OBJ PCP
B1-NOPS	Enhanced Flow Performance through Network Operational Planning	SOL OI OBJ PCP

