



AUO-0226 — SBT/RBT: Exchange of eFPL with ATC

The eFPL (FF-ICE filed plan) information provided by AUs will be distributed to the ATC by NM through Flight Object or possibly other means. The information such as T/O weight, weight profile, 4DT will be used by ATC systems and be a part of the SBT/RBT. ATC will use that to improve the trajectory prediction for all ATC/INAP functions and get more precise view of AU trajectory preference

Rationale -

Forecast V3 end date 31-12-2019

Benefits start date (IOC) 31-12-2026

Full benefits date (FOC) 31-12-2030

Current Maturity Level V2

Solution Data Quality Index -

Current Maturity Phase R&D

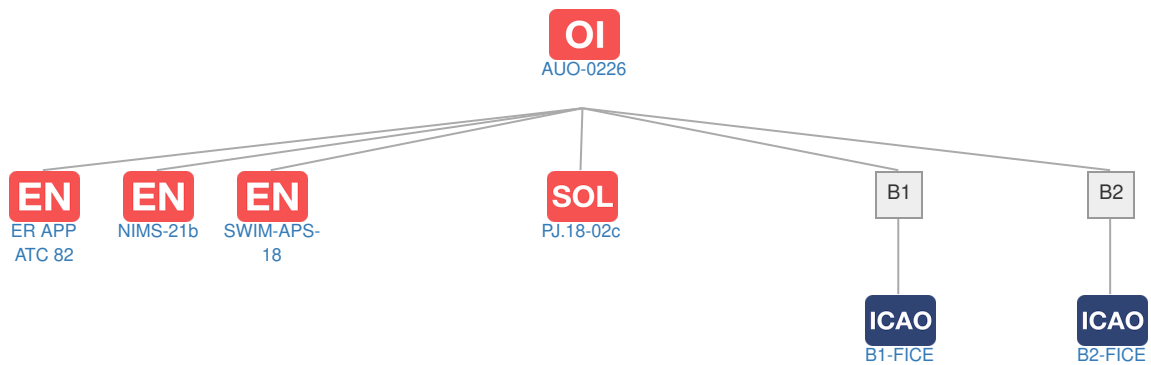
Scope -

Release -

PCP Status -

Context

Related Elements



EN Enablers

| Code | Dates | | | | | | | | | | | | | | | | | | | | | | | | | | |
|---------------|-------|----|----|----|----|----|----|----|----|----|----|----|----|----|----|----|----|----|----|----|----|----|----|----|----|----|--|
| | 15 | 16 | 17 | 18 | 19 | 20 | 21 | 22 | 23 | 24 | 25 | 26 | 27 | 28 | 29 | 30 | 31 | 32 | 33 | 34 | 35 | 36 | 37 | 38 | 39 | 40 | |
| AUO-0226 | | | | | | | | | | | | | | | | | | | | | | | | | | | |
| ER APP ATC 82 | | | | | | | | | | | | | | | | | | | | | | | | | | | |
| NIMS-21b | | | | | | | | | | | | | | | | | | | | | | | | | | | |
| SWIM-APS-18 | | | | | | | | | | | | | | | | | | | | | | | | | | | |

OI Dependent OI Steps: No associated data

SOL SESAR Solutions

| Code | Title | Program | Related Elements |
|-----------|---------------------------------------|-------------------|---|
| PJ.18-02c | eFPL Supporting SBT Transition to RBT | SESAR 2020 Wave 1 | PJ OI DS EOC ICAO |

PCP PCP Elements: No associated data

OBJ Implementation Objectives: No associated data

ICAO ICAO Block Modules

| Designator | Title | Related Elements |
|------------|--|--|
| B1 | | |
| B1-FICE | Increased Interoperability, Efficiency and Capacity through FF-ICE, STEP 1 application before departure | SOL OI OBJ PCP |
| B2 | | |
| B2-FICE | Improved Coordination through multi-centre Ground-Ground Integration: (FF-ICE, Step 1 and Flight Object, SWIM) | SOL OI PCP |