



DCB-0304 — Improved Integration of Regional Airports into the Network

Regional airports (e.g. small to medium-sized) exchange of departure information with the Network Manager (former CFMU) helps to improve traffic flow through the airways network.

Rationale Better integration of regional airports (e.g. small to medium-sized) could enhance the network benefit and improve the flow management process.

Forecast V3 end date -

Benefits start date (IOC) 31-12-2017

Full benefits date (FOC) 31-12-2029

Current Maturity Level V3 finalised

Solution Data Quality Index -

Current Maturity Phase R&D Finalised

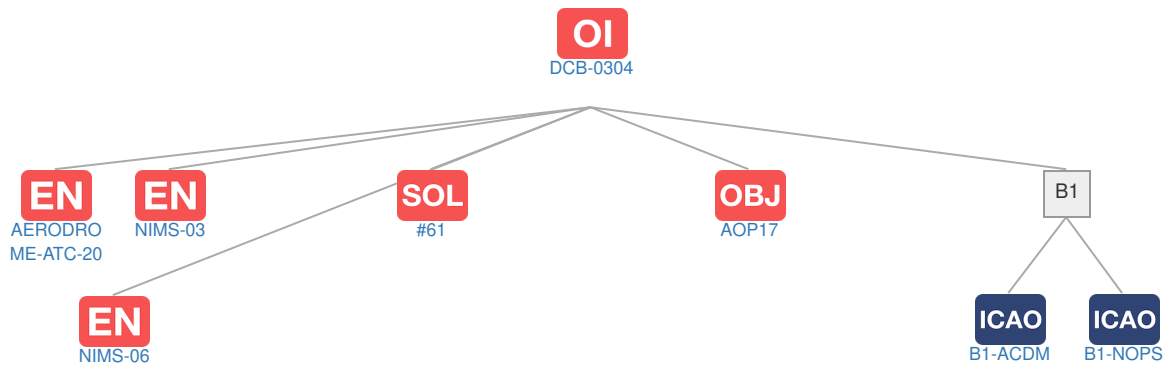
Scope Synchronised

Release R1

PCP Status -

Context

Related Elements



EN Enablers

Code	Dates																															
	15	16	17	18	19	20	21	22	23	24	25	26	27	28	29	30	31	32	33	34	35	36	37	38	39	40						
DCB-0304				[Yellow bar]																												
AERODROME-ATC-20	V4	V5	[Blue bar: IOC - FOC]																													
NIMS-03	[Blue bar]		[Blue bar: IOC - FOC]																													
NIMS-06	V4	V5	[Blue bar: IOC - FOC]																													

OI Dependent OI Steps

Relationship	Code	Title	Related Elements
Has successor	AO-0824	Network-connected Regional Airports	

SOL SESAR Solutions

Code	Title	Program	Related Elements
#61	CWP Airport - Low Cost and Simple Departure Data Entry Panel	SESAR1	

PCP PCP Elements: No associated data

OBJ Implementation Objectives

Code	Title	Related Elements
AOP17	Provision/integration of departure planning information to NMOC	

ICAO ICAO Block Modules

Designator	Title	Related Elements
B1		
B1-ACDM	Optimized Airport Operations through A-CDM Total Airport Management	
B1-NOPS	Enhanced Flow Performance through Network Operational Planning	