



# AO-0803 — Integration of Airports into ATM through Monitoring of Airport Transit View (Extension of Performance Monitoring building on A-CDM)

Improvement of the ATM/airport operations through the integration and monitoring of Airport Transit Views (Aircraft flows). An Airport Transit View describes the visit of an airframe to an airport. This includes the connections with inbound-outbound airborne segments (which are parts of SBT/RBT) as well as the main CDM milestones (e.g. TLDT, TIBT, TOBT / TSAT and TTOT). This concept builds on A-CDM to describe the functional and technical requirements for monitoring of aircraft movements at an airport in both the planning and execution timeframe.

**Rationale** The way Airspace Users address aircraft business trajectory is based on a single airframe. The Airport operates in an environment where the combined operation of all the airframes on or near the airport at a given time impact on the performance of the Airport. Monitoring of the Airport Transit View, combined with resource availability and utilisation and its drivers through performance driver indicators, is important for the predictability required to support integration of airports into the ATM network.

**Forecast V3 end date** -

**Benefits start date (IOC)** 31-12-2022

**Full benefits date (FOC)** 31-12-2026

**Current Maturity Level** V3 finalised

**Solution Data Quality Index** -

**Current Maturity Phase** R&D

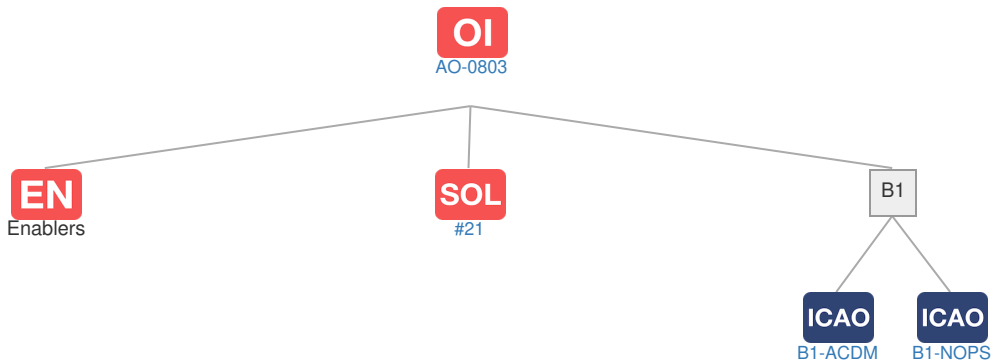
**Scope** -

**Release** R5

**PCP Status** -

## Context

### Related Elements



**EN** Enablers

Code	Dates																																				
	15	16	17	18	19	20	21	22	23	24	25	26	27	28	29	30	31	32	33	34	35	36	37	38	39	40											
AO-0803																																					
🔒 AERODROME-ATC-57				▲																																	
🔒 AIRPORT-03	▲	V5																																			
🔒 AIRPORT-04			▲																																		
🔒 AIRPORT-31																																					
🔒 AIRPORT-38	▲	V4	V5																																		
🔒 AIRPORT-40	▲																																				
🔒 CTE-C06b				▲																																	
🔒 HUM-007	▲	V5																																			
🔒 HUM-016	▲	V5																																			
🔒 METEO-03				▲	V4	V5																															
🔒 METEO-04b				▲	V4	V5																															
🔒 PRO-073a	▲	V5																																			
🔒 SWIM-APS-03a				▲	V4	V5																															
🔒 SWIM-APS-04a				▲																																	
🔒 SWIM-INFR-05a				▲	V4	V5																															
🔒 SWIM-NET-01a																																					
➔ SWIM-SUPT-01a																																					
➔ SWIM-SUPT-03a																																					
➔ SWIM-SUPT-05a																																					

**OI** Dependent OI Steps

Relationship	Code	Title	Related Elements
Has predecessor	AO-0801-A	Collaborative Airport Planning Interface	SOL OI EN OBJ DS PCP ICAO A2A

**SOL** SESAR Solutions

Code	Title	Program	Related Elements
#21	Airport Operations Plan and AOP-NOP Seamless Integration	SESAR1	SOL OI OBJ DS EOC PCP ICAO

**PCP** PCP Elements: No associated data

**OBJ** Implementation Objectives: No associated data

**ICAO** ICAO Block Modules

Designator	Title	Related Elements
B1		
B1-ACDM	Optimized Airport Operations through A-CDM Total Airport Management	<b>SOL</b> <b>OI</b> <b>OBJ</b> <b>PCP</b>
B1-NOPS	Enhanced Flow Performance through Network Operational Planning	<b>SOL</b> <b>OI</b> <b>OBJ</b> <b>PCP</b>