



# AO-0205 — Automated Assistance to Controller for Surface Movement Planning and Routing

The System provides the controller with the most suitable taxi route, calculated by:

- optimizing the selected criteria (e.g. delay, distance, emissions or a combination thereof), and
- conforming to the planning, ground rules and known operational constraints.

Expected benefits are an increased situational awareness of controllers, particularly in LVPs, and an improved predictability of ground movements thanks to the computation of more accurate and reliable estimated taxi times.

**Rationale** There is a need at some airports with complex layout to improve the allocation of taxi routes to aircraft and vehicles under ATC by supporting the controller with a tool that automatically plans taxi routes and make them known to the ATC system, which is required by some conformance monitoring alerts, the A-SMGCS Guidance function and the sequencing of departures flights at the runway.

**Forecast V3 end date** -

**Benefits start date (IOC)** 31-12-2021

**Full benefits date (FOC)** 31-12-2025

**Current Maturity Level** V3 finalised

**Solution Data Quality Index** -

**Current Maturity Phase** R&D

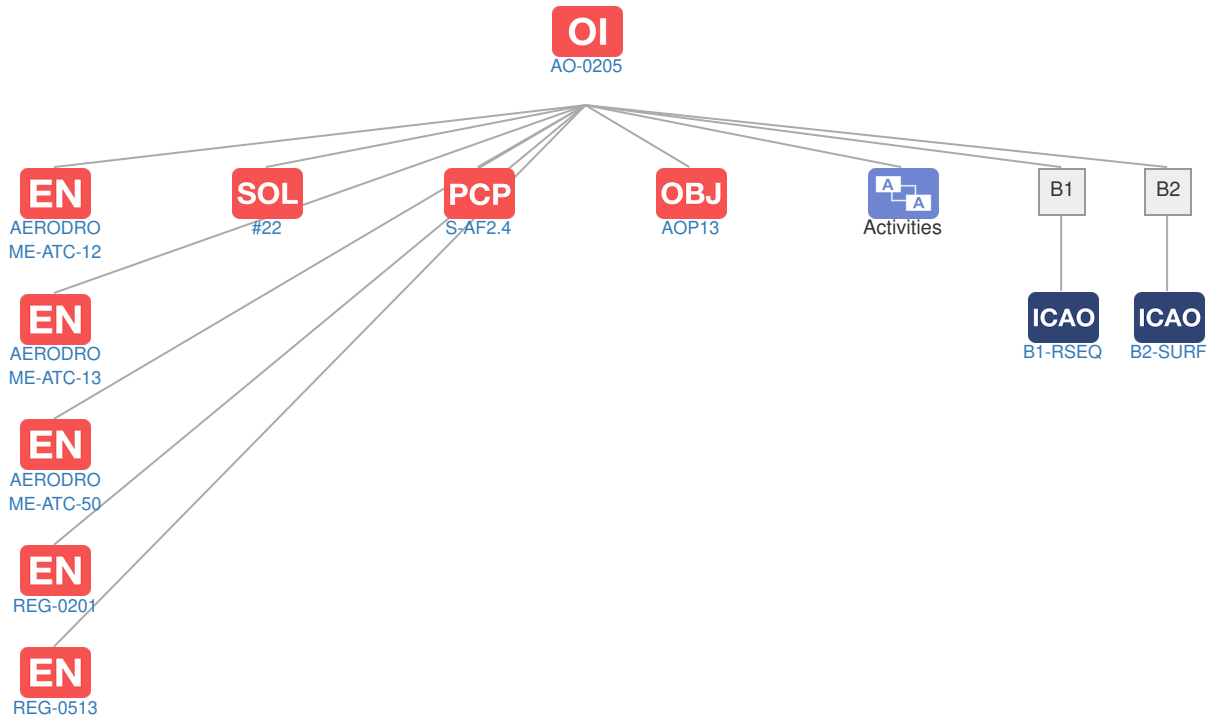
**Scope** Local

**Release** R5

**PCP Status** PCP

## Context

### Related Elements



## EN Enablers

Code	Dates																																				
	15	16	17	18	19	20	21	22	23	24	25	26	27	28	29	30	31	32	33	34	35	36	37	38	39	40											
AO-0205																																					
AERODROME-ATC-12																																					
AERODROME-ATC-13			▲				V4	V5	IOC - FOC																												
AERODROME-ATC-50			▲	V4	V5	IOC - FOC																															
REG-0201			▲																																		
REG-0513									▲																												

## OI Dependent OI Steps

Relationship Code	Title	Related Elements
Has successor	AO-0222-B Full Guidance Assistance to mobiles using 'Follow the Greens' procedures based on Airfield Ground Lighting (aprons/taxiways/runways)	

## SOL SESAR Solutions

Code	Title	Program	Related Elements
#22	Automated Assistance to Controller for Surface Movement Planning and Routing	SESAR1	 

## PCP PCP Elements

Code	Title	Related Elements
S-AF2.4	Automated Assistance to Controller for Surface Movement Planning and Routing	 

## OBJ Implementation Objectives

Code	Title	Related Elements
AOP13	Automated Assistance to Controller for Surface Movement Planning and Routing	 



## ICAO Block Modules

Designator	Title	Related Elements
B1		
B1-RSEQ	Improved Airport operations through Departure, Surface and Arrival Management	SOL OI OBJ PCP
B2		
B2-SURF	Optimized Surface Routing and Safety Benefits (A-SMGCS Level 3-4 and SVS)	SOL OI OBJ PCP