



Solution PJ.09-02 — Integrated Local DCB Processes

Integrated Local DCB Processes see the seamless integration of local network management with extended ATC planning and arrival management activities in shortterm and execution phases. It represents the core functionality for the Integrated Network ATM Planning (INAP) process through an enhanced Local DCB tool set. The solution will improve the efficiency of ATM resource management, as well as the effectiveness of complexity resolutions by closing the gap between local network management and extended ATC planning.

Program SESAR 2020 Wave 1

Need for coordination Network

Related to [Solution #18](#), [Solution #19](#), [Solution #46](#), [Solution PJ.01-01](#), [Solution PJ.01-02](#), [Solution PJ.08-01](#), [Solution PJ.08-02](#), [Solution PJ.09-01](#), [Solution PJ.09-03](#), [Solution PJ.10-01b](#)

Date V1 Gate -

Date V2 Gate -

Date V3 Gate -

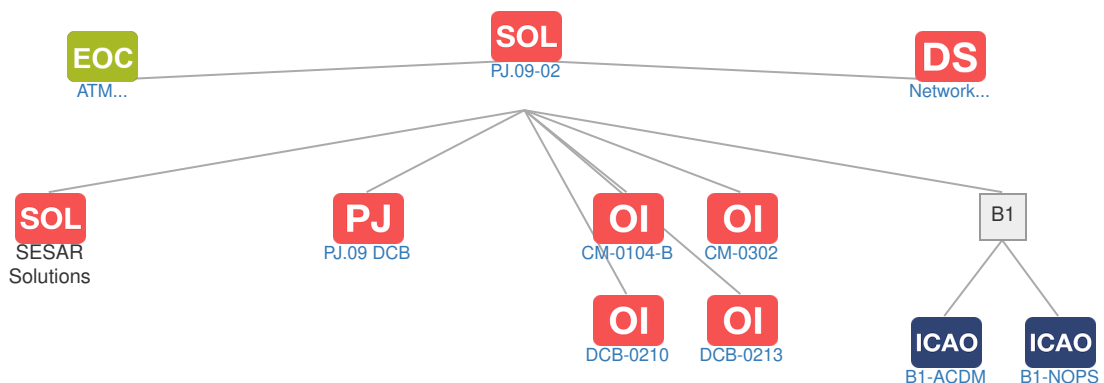
Deployment Start Date 01-04-2022

Benefits Start Date (IOC) 31-03-2028

Full Benefit Date (FOC) 31-03-2034

Context

Related Elements





Operating Environments: No associated data



Phases: No associated data



SESAR Projects

Code	Title	Related Elements
PJ.09 DCB	Advanced Demand and Capacity Balancing	SOL



ICAO Block Modules

Designator	Title	Related Elements
B1		
B1-ACDM	Optimized Airport Operations through A-CDM Total Airport Management	SOL OI OBJ PCP
B1-NOPS	Enhanced Flow Performance through Network Operational Planning	SOL OI OBJ PCP