



# Solution #05 — Extended Arrival Management (AMAN) horizon

Operational procedures and technical specifications for the integration of the information from arrival management systems operating out to an extended distance to provide an enhanced and more consistent arrival sequence.

The system helps to reduce holding by absorbing some of the queuing time further upstream well into En Route. Includes integration of traffic departing from within the AMAN horizon of the destination airport. In Step 1, the 'newly' impacted En Route sectors are expected to contribute to the sequencing towards a single TMA.

**Program** SESAR1

**Need for coordination** Network

**Related to** [Solution #06](#), [Solution #08](#), [Solution #16](#), [Solution #46](#), [Solution PJ.01-01](#)

**Date V1 Gate** -

**Date V2 Gate** -

**Date V3 Gate** -

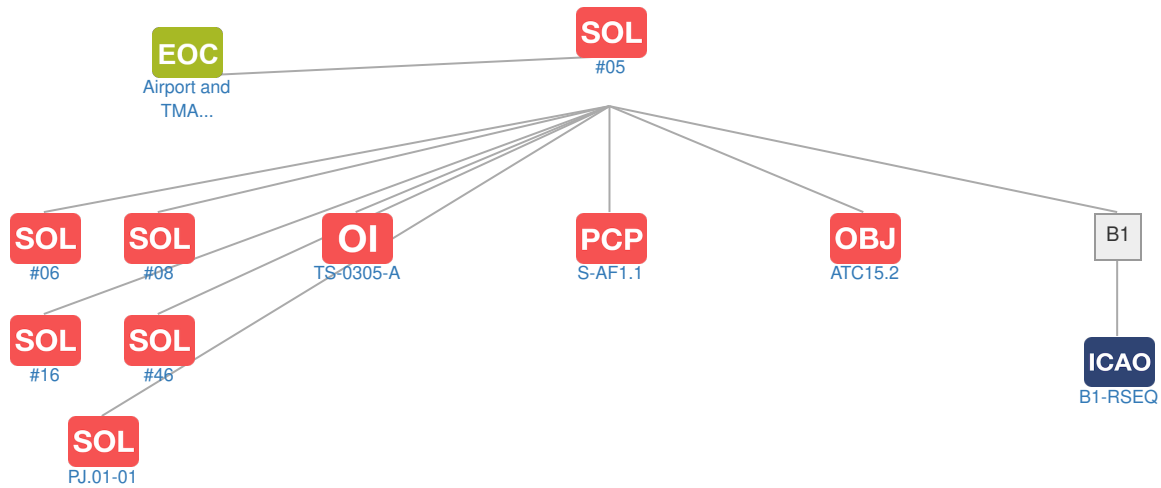
**Deployment Start Date** -

**Benefits Start Date (IOC)** 31-12-2021

**Full Benefit Date (FOC)** 31-12-2025

## Context

### Related Elements







## ICAO Block Modules

Designator	Title	Related Elements
B1		
B1-RSEQ	Improved Airport operations through Departure, Surface and Arrival Management	<b>SOL</b> <b>OI</b> <b>OBJ</b> <b>PCP</b>