



Solution #19 — Automated support for Traffic Complexity Detection and Resolution

Automated tools support the ATC team in identifying, assessing and resolving local complexity situations. It relies on a real time integrated process for managing the complexity of the traffic with capability to reduce traffic peaks through early implementation of measures for workload balancing Traffic Complexity Assessment and Individual Traffic Complexity based solutions

Program SESAR1

Need for coordination Network

Related to [Solution #46](#), [Solution PJ.09-01](#), [Solution PJ.09-02](#)

Date V1 Gate -

Date V2 Gate -

Date V3 Gate -

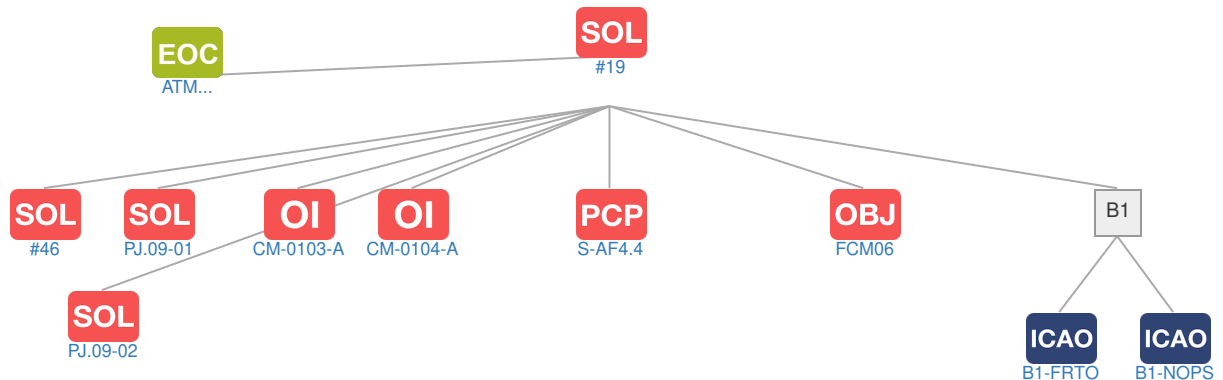
Deployment Start Date 31-12-2018

Benefits Start Date (IOC) 31-12-2023

Full Benefit Date (FOC) 31-12-2027

Context

Related Elements



PCP PCP Elements

Code	Title	Related Elements
S-AF4.4	Automated Support for Traffic Complexity Assessment	SOL OI EN OBJ ICAO

OBJ Implementation Objectives

Code	Title	Related Elements
FCM06	Traffic Complexity Assessment	SOL STK SOL OI EN PCP

ICAO ICAO Block Modules

Designator	Title	Related Elements
B1		
B1-FRTO	Improved Operations through Optimized ATS Routing	SOL OI OBJ PCP
B1-NOPS	Enhanced Flow Performance through Network Operational Planning	SOL OI OBJ PCP