



Solution PJ.03a-01 — Enhanced Guidance Assistance to Aircraft and Vehicles on the Airport Surface Combined with Routing

Enhanced Guidance Assistance to Aircraft and Vehicles on the Airport Surface Combined with Routing sees the extension of the A-SMGCS routing function to avoid potential traffic conflicts, an improved use of AMAN and DMAN information and integration with total airport management procedures. It includes the exchange of virtual stop bar identifier and status between ATCOs and flight crews to improve safety in low visibility conditions. The exchange of information between ATC and vehicles/aircrafts will be improved with the use of airport data link and other guidance means.

Program SESAR 2020 Wave 1

Need for coordination Network

Related to [Solution #04](#), [Solution #26](#), [Solution #46](#), [Solution PJ.03a-03](#), [Solution PJ.03b-01](#), [Solution PJ.03b-03](#), [Solution PJ.03b-05](#), [Solution PJ.07-01](#), [Solution PJ.07-02](#)

Date V1 Gate -

Date V2 Gate -

Date V3 Gate -

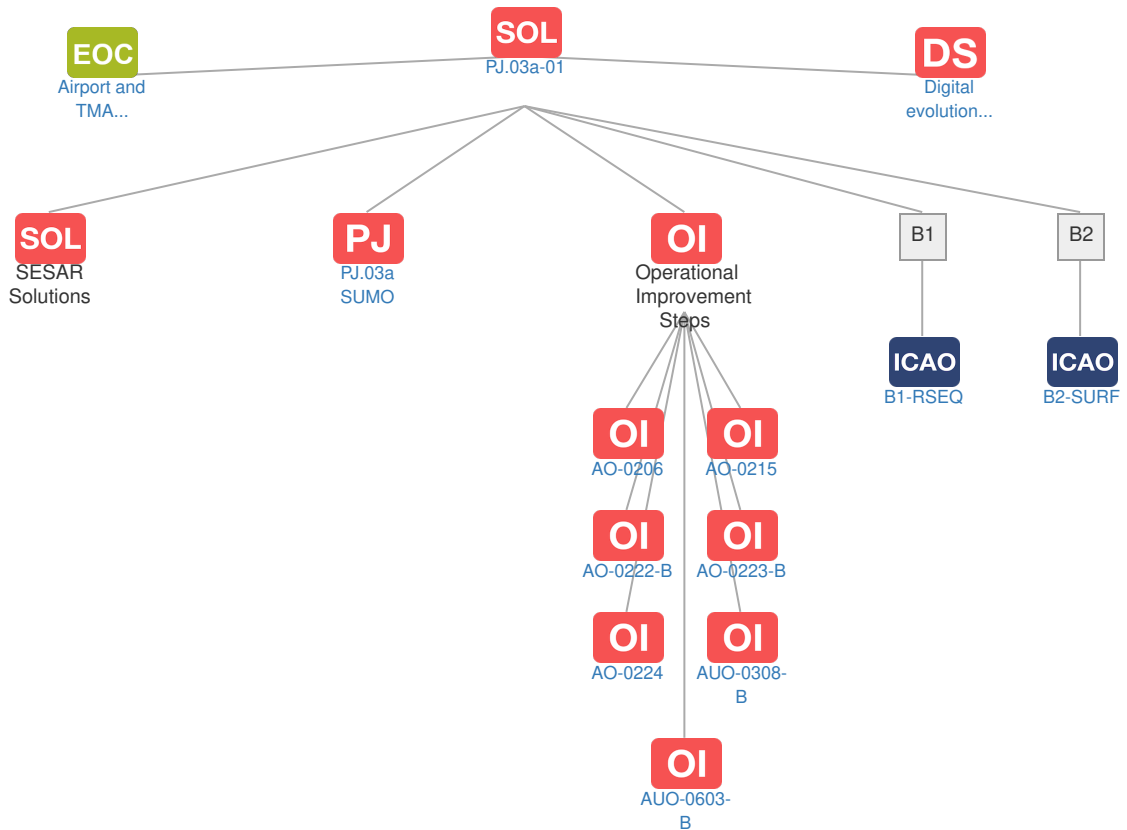
Deployment Start Date 31-12-2017

Benefits Start Date (IOC) 31-12-2028

Full Benefit Date (FOC) 31-12-2032

Context

Related Elements





Operating Environments: No associated data



Phases: No associated data



SESAR Projects

Code	Title	Related Elements
PJ.03a SUMO	Integrated Surface Management	SOL



Operational Improvement Steps / Enablers

Code	Dates	Solution Data Quality Index : -																										
		15	16	17	18	19	20	21	22	23	24	25	26	27	28	29	30	31	32	33	34	35	36	37	38	39	40	
PJ.03a-01																												
AO-0206																												
AIRPORT-30																												
AIRPORT-44																												
CTE-C02d																												
CTE-S03f																												
CTE-C02b																												
CTE-C02e																												
CTE-C02f																												
CTE-C02h																												
CTE-C03a																												
CTE-C03b																												
CTE-C03c																												
CTE-C04																												
CTE-S02b																												
CTE-S03b																												
CTE-S03e																												
CTE-S04b																												
AO-0215																												
AERODROME-ATC-14																												
AIRPORT-01																												
AIRPORT-30																												
CTE-C02d																												
CTE-C02b																												

→	CTE-C02e		▲						IOC - FOC
→	CTE-C02f		▲	V4	V5	IOC - FOC			
→	CTE-C03a								
→	CTE-C03b	▲			▲				IOC - FOC
→	CTE-C03c		▲		V4	V5			IOC - FOC
AO-0222-B									
🔒	AERODROME-ATC-61b				▲	V4	V5	IOC - FOC	
→	AERODROME-ATC-07b				▲	V4	V5	IOC - FOC	
→	AERODROME-ATC-23a	▲							
AO-0223-B									
🔒	AERODROME-ATC-86				▲	V4	V5	IOC - FOC	
AO-0224									
🔒	AERODROME-ATC-12b				▲	V4	V5	IOC - FOC	
→	AERODROME-ATC-23a	▲							
AUO-0308-B									
🔒	A/C-31a			V4		IOC - FOC			
🔒	AERODROME-ATC-02b				▲	V4	V5	IOC - FOC	
→	CTE-C02d	▲		V4		IOC - FOC			
AUO-0603-B									
🔒	A/C-24			IOC - FOC					
🔒	A/C-31a			V4		IOC - FOC			
🔒	A/C-42a				▲				
🔒	A/C-42c				▲	V4		IOC - FOC	
→	CTE-C02d	▲		V4		IOC - FOC			
→	METEO-03c				▲	V4	V5	IOC - FOC	
→	METEO-04c				▲	V4	V5	IOC - FOC	
→	REG-0200				△				

PCP PCP Elements: No associated data

OBJ Implementation Objectives: No associated data



ICAO Block Modules

Designator	Title	Related Elements
B1		
B1-RSEQ	Improved Airport operations through Departure, Surface and Arrival Management	SOL OI OBJ PCP
B2		
B2-SURF	Optimized Surface Routing and Safety Benefits (A-SMGCS Level 3-4 and SVS)	SOL OI OBJ PCP